

Access Doors, Foundation

Anchor Bolts

Angles, Rolled

Area Walls and Grates
 (Standard Grade)

Area Walls (Regular Grade)

Area Walls (Commercial Grade)

Area Walls (Egress)

Area Wall Grates,
 Covers and Ladders

Ash Dumps

Bar and Perforated
 Strainers (Cast Iron)

Bell Traps (Cast Iron and PVC)

Brick Clamps

Chimney Caps and Accessories

Cleanout Doors
 (Cast Iron and Steel)

Columns (Adjustable and Fixed)

Column Components
 and Tubing

Dampers and Controls
 (Cast Iron)

Foundation Anchors

Jack Posts

Lintels (Block and Brick)

Mortar Boxes and Pans

Nail Stakes (Steel)

Trench Drain

Ventilators, Foundation

Wall Ties

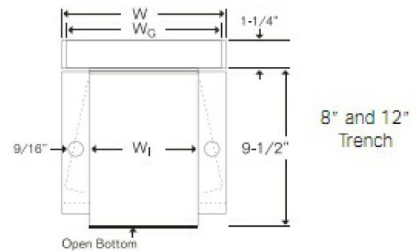
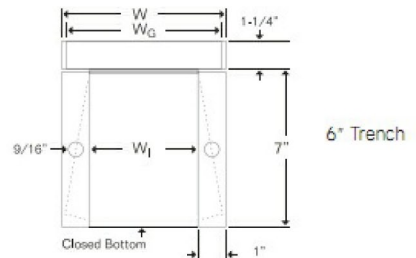
Trench Drain



- Standard Lengths:
 6" Wide - 1', 4', 5', and 6'
 8" Wide - 4'
 12" Wide - 4'

- Skid Quantities:
 6"-4' and 5' - 49 pieces
 6"-6' - 35 pieces
 8"-4' - 25 pieces
 12"-4' - 15 pieces

Model	Size	Description	Weight (#)
6TDSG	6"	Steel Bottom - Steel Grate	10/Ft.
6TDCG	6"	Steel Bottom - Cast Grate	14.8/Ft.
6EPS	6"	End Plate - Steel - Solid	1.0
6EPSH	6"	End Plate - Steel w/ 4-1/4" Hole	0.9
6GS	6"	Steel Grate Only	5/Ft.
6GC	6"	Cast Iron Grate Only - 2 Ft. Sec.	19.4
8TDSG4	8"	Open Bottom - Steel Grate	13.5/Ft.
8EPS	8"	End Plate - Steel - Solid	2.0
8EPSH	8"	End Plate - Steel w/ 4-1/4" Hole	1.0
12TDSG4	12"	Open Bottom - Steel Grate	14.8/Ft.
12EPS	12"	End Plate - Steel - Solid	2.6
12EPSH	12"	End Plate - Steel w/ 4-1/4" Hole	2.4



Product Widths	Trench Sizes		
	6"	8"	12"
Top (W)	6-1/2"	8-1/4"	12-1/4"
Grate (W _G)	5-7/8"	7-7/8"	11-7/8"
Box (W ₁)	4-1/2"	6-1/4"	10-1/4"

Click here for
 Marshall's Online
 Catalog
 (Downloadable .PDF)