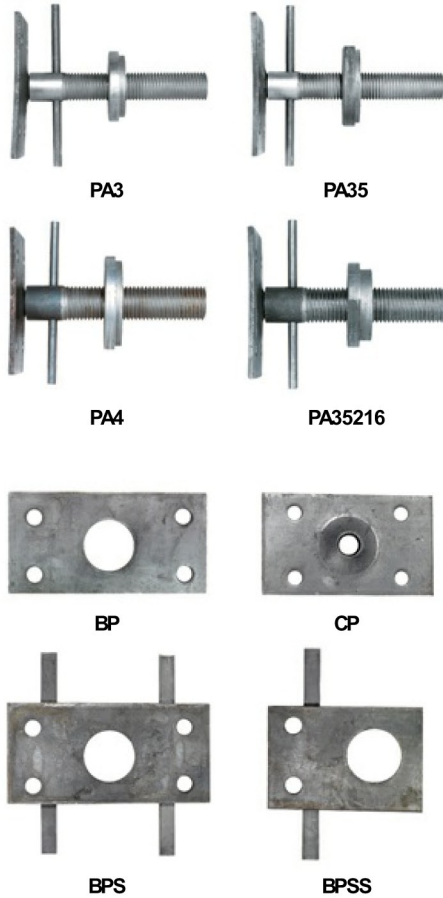


- Access Doors, Foundation
- Anchor Bolts
- Angles, Rolled
- Area Walls and Grates (Standard Grade)
- Area Walls (Regular Grade)
- Area Walls (Commercial Grade)
- Area Walls (Egress)
- Area Wall Grates, Covers and Ladders
- Ash Dumps
- Bar and Perforated Strainers (Cast Iron)
- Bell Traps (Cast Iron and PVC)
- Brick Clamps
- Chimney Caps and Accessories
- Cleanout Doors (Cast Iron and Steel)
- Columns (Adjustable and Fixed)
- Column Components and Tubing
- Dampers and Controls (Cast Iron)
- Foundation Anchors
- Jack Posts
- Lintels (Block and Brick)
- Mortar Boxes and Pans
- Nail Stakes (Steel)
- Trench Drain
- Ventilators, Foundation
- Wall Ties

Extend-O-Columns:
[3" Diameter, 11 Gauge](#)
[3 1/2" Diameter, 11 Gauge](#)
[4" Diameter, 11 Gauge](#)
[3 1/2" Diameter, .216 Wall](#)

Fixed Length Columns:
[3" Diameter, 11 Gauge](#)
[3 1/2" Diameter, 11 Gauge](#)
[4" Diameter, 11 Gauge](#)
[3 1/2" Diameter, .216 Wall](#)
Column Accessories:
[Click Here](#)

Column Components and Tubing



Permanent Screw Assembly (C-Plate Attached To Screw)				
Model	Size	Adjustment	Weight (#)	Maximum Load*
PA3	3" O.D. Tube	4"	4.5	18,700#
PA35	3-1/2" O.D. Tube	4"	5.5	23,800
PA4	4" O.D. Tube	4"	6.5	28,900
PA35216	3-1/2" O.D. x .216 Wall	4"	6.5	41,500

Turning Bar Included with Each Assembly

*All Screw Assemblies must be encased in minimum 3,500 psi concrete; installed head first, with collar nut buried.

Caps & Base Plates		
Model	Dimensions	Weight (#)
BP	4" x 8" x 1/4" - 2" Center hole	2.0
BPS	4" x 8" x 1/4" - 2" Center hole w/ straps	2.3
BPSS	4" x 5-3/4" x 1/4" - 2" Center hole	1.5
CP	3-1/2" x 6" x 1/4" - 5/8" Center hole	1.5
PS	1/8" x 8" x 5/8" Straps (2) welded to above B plate.	0.5
TB	3/8" x 7" Turning Bar	0.5

Shipped: Loose

- "B" Plates interchangeable to fit top and bottom of column
- "BPS"-"B" Plate with straps
- "BPSS" Shorter length fits corners of partition walls
- "C" Plate used with permanent assembly
- Plates have full bearing on all common beam flanges
- Holes provided for bolt or lag-screw attachment to beam

11 Gauge Tubing A500 Grade B			
Model	Size	Length	Weight (#)
T324	3" O.D.	24'	89
T3524	3-1/2" O.D.	24'	103
T424	4" O.D.	24'	120

.216 Wall Tubing A500 Grade B			
Model	Size	Length	Weight (#)
T3524216	3-1/2" O.D.	24'	182

IMPORTANT

Not responsible for the installation, alteration, or modification of any completed product, or the usage of any component in the fabrication of any product beyond our control

Click here for
 Marshall's Online
 Catalog
 (Downloadable .PDF)

